

How to Update Firmware on a Symbio 800 Controller

Table of Contents

- Introduction 2
 - Warnings, Cautions, and Notices 2
 - Copyright..... 3
 - Trademarks 3
- Required Items..... 4
- Get Symbio 800 Firmware 4
- Update Firmware 4

⚠ SAFETY WARNING

Only qualified personnel should install and service the equipment. The installation, starting up, and servicing of heating, ventilating, and air-conditioning equipment can be hazardous and requires specific knowledge and training. Improperly installed, adjusted or altered equipment by an unqualified person could result in death or serious injury. When working on the equipment, observe all precautions in the literature and on the tags, stickers, and labels that are attached to the equipment.

Introduction

Warnings, Cautions, and Notices

Safety advisories appear throughout this manual as required. Your personal safety and the proper operation of this machine depend upon the strict observance of these precautions.

The three types of advisories are defined as follows:

⚠ WARNING Indicates a potentially hazardous situation which, if not avoided, could result in death or serious injury.

⚠ CAUTION Indicates a potentially hazardous situation which, if not avoided, could result in minor or moderate injury. It could also be used to alert against unsafe practices.

NOTICE Indicates a situation that could result in equipment or property-damage only accidents.

⚠ WARNING

Proper Field Wiring and Grounding Required!

Failure to follow code could result in death or serious injury. All field wiring **MUST** be performed by qualified personnel. Improperly installed and grounded field wiring poses **FIRE** and **ELECTROCUTION** hazards. To avoid these hazards, you **MUST** follow requirements for field wiring installation and grounding as described in NEC and your local/state electrical codes. Failure to follow code could result in death or serious injury.

⚠ WARNING

Follow EHS Policies!

Failure to follow instructions below could result in death or serious injury.

- All Trane personnel must follow the company's Environmental, Health and Safety (EHS) policies when performing work such as hot work, electrical, fall protection, lockout/tagout, refrigerant handling, etc. Where local regulations are more stringent than these policies, those regulations supersede these policies.
- Non-Trane personnel should always follow local regulations.

⚠ WARNING

Personal Protective Equipment (PPE) Required!

Failure to wear proper PPE for the job being undertaken could result in death or serious injury. Technicians, in order to protect themselves from potential electrical, mechanical, and chemical hazards, **MUST** follow precautions in this manual and on the tags, stickers, and labels, as well as the instructions below:

- Before installing/servicing this unit, technicians **MUST** put on all PPE required for the work being undertaken (Examples; cut resistant gloves/sleeves, butyl gloves, safety glasses, hard hat/bump cap, fall protection, electrical PPE and arc flash clothing). **ALWAYS** refer to appropriate Safety Data Sheets (SDS) and OSHA guidelines for proper PPE.
- When working with or around hazardous chemicals, **ALWAYS** refer to the appropriate SDS and OSHA/GHS (Global Harmonized System of Classification and Labeling of Chemicals) guidelines for information on allowable personal exposure levels, proper respiratory protection and handling instructions.
- If there is a risk of energized electrical contact, arc, or flash, technicians **MUST** put on all PPE in accordance with OSHA, NFPA 70E, or other country-specific requirements for arc flash protection, **PRIOR** to servicing the unit. **NEVER PERFORM ANY SWITCHING, DISCONNECTING, OR VOLTAGE TESTING WITHOUT PROPER ELECTRICAL PPE AND ARC FLASH CLOTHING. ENSURE ELECTRICAL METERS AND EQUIPMENT ARE PROPERLY RATED FOR INTENDED VOLTAGE.**

⚠ WARNING

Electrical Shock, Explosion, or Arc Flash Hazard!

Failure to follow these instructions could result in death or serious injury.

- Install the product in an appropriate electrical/fire enclosure per local regulations. Do not install the product in hazardous or classified locations.
- Do not use the product for life or safety applications.
- Do not exceed the product ratings or maximum limits. Products rated only for basic insulation must be installed on insulated conductors.
- Current transformer secondaries (current mode) must be shorted or connected to a burden at all times.
- Remove all wire scraps, tools, replace all doors, covers and protective devices before powering the equipment.

Copyright

This document and the information in it are the property of Trane, and may not be used or reproduced in whole or in part without written permission. Trane reserves the right to revise this publication at any time, and to make changes to its content without obligation to notify any person of such revision or change.

Trademarks

All trademarks referenced in this document are the trademarks of their respective owners.

Required Items

To update the firmware on a Symbio® 800 controller the following items will be needed.

- Computer
- USB A to B Cable

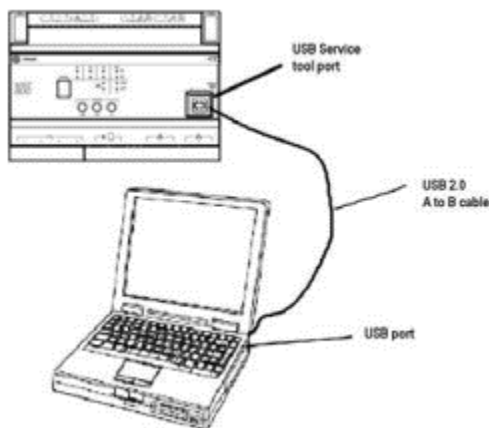
Get Symbio 800 Firmware

The latest firmware for the Symbio® 800 controller must be downloaded from Trane.com. If you already have the correct firmware for the controller on your computer skip ahead to the [Update Firmware](#).

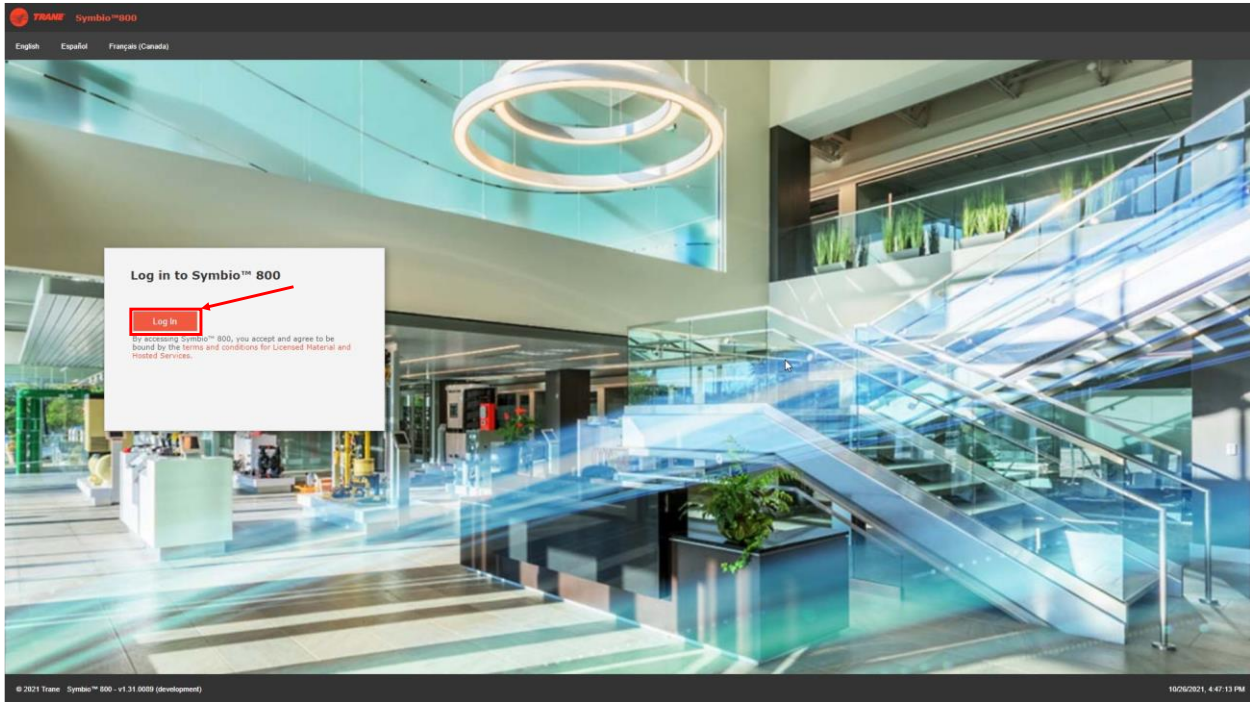
1. Visit the [Trane Software Download](#) page and download the latest version of the Symbio 800 firmware to your computer. Keep track of where the firmware file is downloaded on your computer, you will need to reference this location again when updating the firmware.

Update Firmware

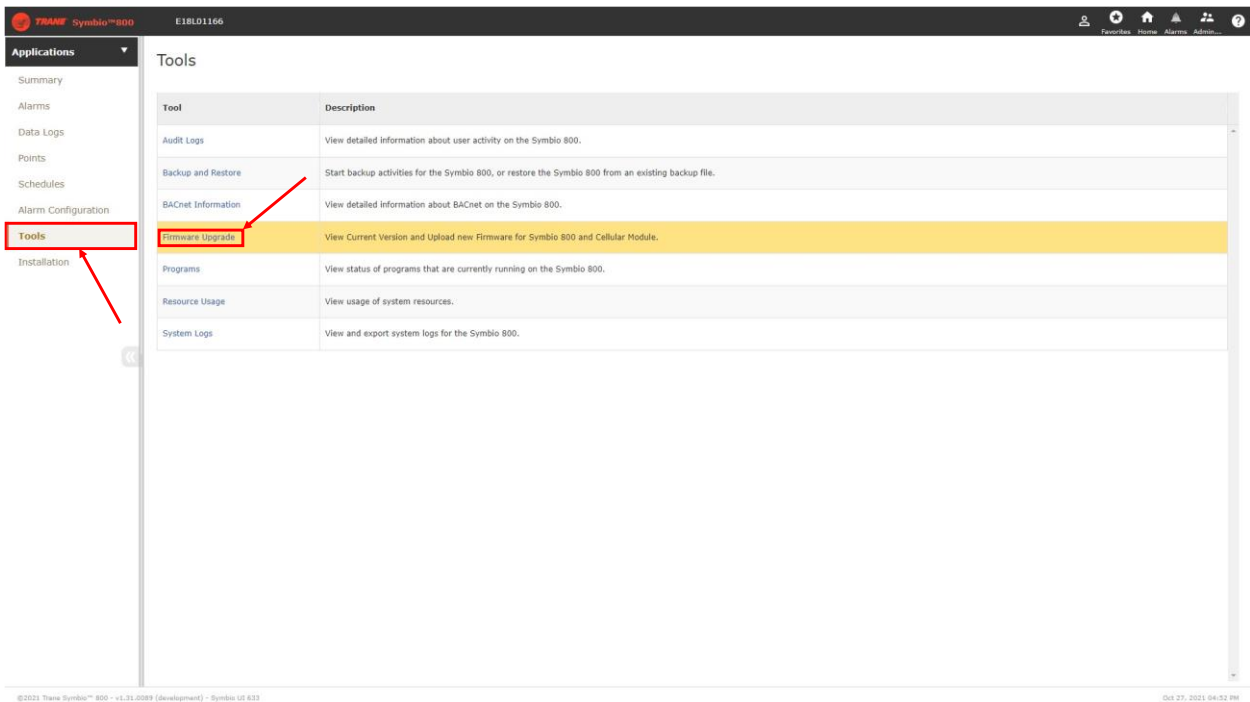
1. Verify the equipment is stopped and the Symbio 800 controller is powered.
2. Connect your laptop to the USB service tool port using a USB 2.0 A to B cable.



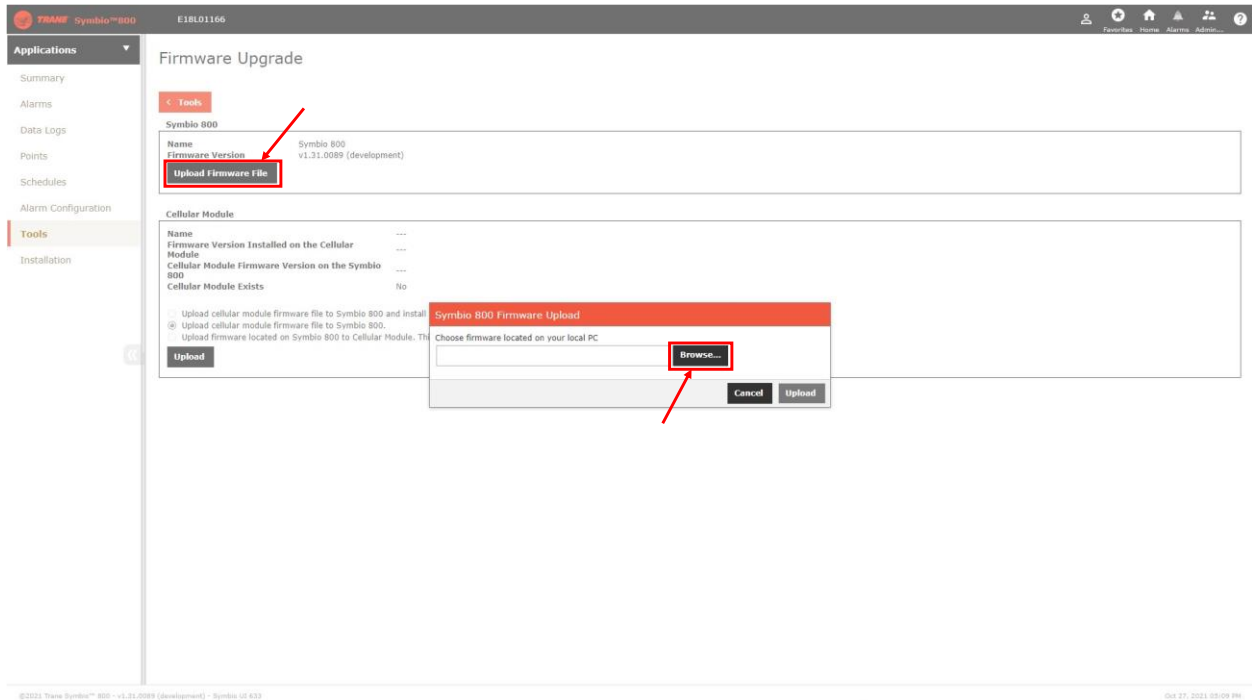
3. Open a web browser and connect to <http://198.80.18.1> to access Symbio™ UI.
4. Once Symbio UI loads select Log In.



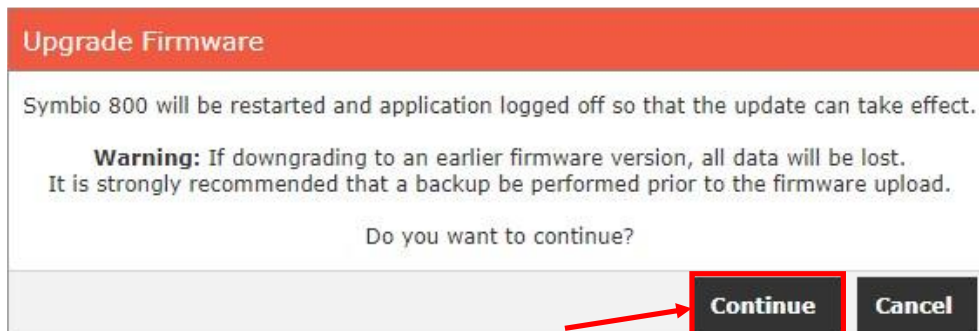
5. From the Summary page select **Tools** and then **Firmware Upgrade**.



6. Click **Upload Firmware File** and then **Browse** to select the firmware file on your computer.



7. After the file has been selected click **Upload**.
8. When prompted read the pop-up message and click **Continue** to proceed.



9. The controller will begin the firmware upgrade process. During this process the equipment will be stopped as the controller reboots. This process usually takes 5-10 minutes to complete. Symbio UI will automatically restart itself during the upgrade process. Do not unplug the USB cable.
10. Log into Symbio UI after it restarts and accept End User License Agreement (EULA).
11. After accepting the EULA, a pop-up message will be shown indicating the upgrade was successful. Click **OK** to proceed.

